



Vehicle Security System GSM/SMS Pager



DS512 ALARM - CAN GSM GPS



INSTALLATION MANUAL

DS512-0400 and higher

Table of contents

1.	DS512 OPERATING PRINCIPLE	5
2.	DS512 SET	7
3.	PREPARATION OF SIM CARD	7
4.	DS512 CONFIGURATION	8
5.	GSM PAGING PARAMETERS SETUP	11
6.	DIAGNOSTIC TOOLS	13
7.	PROGRAMMING OF TYTAN REMOTE TRANSMITTERS	16
8.	BASIC SMS COMMANDS.....	16
9.	INSTALLATION OF DS512.....	19
10.	INSTALLATION OF GPS RECEIVER	19
11.	PREPARATION OF THE DS512 TO WORK.....	21
12.	GIVING THE SYSTEM TO THE USER	21
13.	TECHNICAL DATA	22
14.	DESCRIPTION OF INPUTS/OUTPUTS	22
15.	PROGRAMMABLE AUX MODULE OUTPUT / CHANNEL	22
16.	DS512 WIRING DIAGRAMS.....	25
	DIAGRAM 1 - MODE 3 AND MODE 4 - STAND-ALONE VSS	26
	DIAGRAM 2 - MODE 2 - MONITORING OEM CAN-BUS VSS	27
	DIAGRAM 3 - MODE 1 - PAGER FOR ANY THIRD PARTY ANALOGUE VSS	28
	DIAGRAM 4 - MODE 1 - PAGER FOR ANY THIRD PARTY ANALOGUE VSS (INPUTS MONITORED).....	29
	DIAGRAM 6 - CONNECTION FOR RF MODULE WITH TYTAN REMOTE TRANSMITTERS	31
	DIAGRAM 7 - CONNECTION FOR SECOND ADDITIONAL SENSOR WITH PRE-ALARM	32
	DIAGRAM 8 - AUX MODULE	33

TYTAN DS512 ALARM CAN GPS GSM features

- GSM-SMS pager integrated with CAN-bus Vehicle Security System central unit,
- alarming state signalisation with voice call or SMS in GSM network,
- vehicle GPS position is sent only during alarming or after DS512 receives a PIN protected SMS command,
- if the vehicle GPS position cannot be fixed (e.g. vehicle in underground parking) the device sends last known vehicle position,
- remote (SMS) control of VSS and remote access to VSS trigger source memory,
- valet mode (service mode),
- operation mode as independent Vehicle Security System with CAN-bus connection to vehicle electronic systems is armed/disarmed with OEM remotes or SMS commands,
- operation mode as GSM-SMS Pager monitoring for OEM security system via CAN-bus,
- operation mode as GSM-SMS Pager monitoring for any analogue security system already installed in the vehicle,
- device controlled with simple PIN protected SMS commands or by dedicated Android or iOS application,
- operation with crash sensor (available only on certain markets),
- internal backup battery allows to notify users even after vehicle power supply breach,
- the device resends to the first programmed mobile phone number any SMS received - e.g. sim card provider messages (option),
- vehicle low battery SMS signalisation (option),
- external AUX module with additional programmable output, for example to control auxiliary eating option),
- immobiliser function with optional alarming in case of unauthorised vehicle start or unauthorised vehicle entry

Vehicle Security System (VSS) features

- control by OEM remote transmitters
- control by additional Tytan remote transmitters (optional - only with external RF module),
- arming/disarming with SMS commands or dedicated Android or iOS application,
- signalisation if door / trunk / bonnet is open during arming (door ajar),
- when disarming - signalisation if the alarm was triggered,
- CAN-bus control of hazard lights, central door locking, power windows (in some cars),
- analogue control of central door locking and power windows (optional - only with external RF module),
- additional sensors input
 - vehicle interior protection with ultrasonic motion detector (optional),
 - vehicle towing and wheel theft protection with additional tilt sensor (optional),
- arming without additional sensors,
- state of the system is stored in non-volatile memory and is saved during power-off.

1. DS512 OPERATING PRINCIPLE

The DS512 is a device that combines function of a SMS pager, stand-alone Vehicle Security System (VSS), passive immobiliser and Anti-hijack device (only where the reg.97 UN ECE does not apply).

The general purpose of DS512 is to notify up to 3 mobile phone numbers with voice call or SMS information containing status of vehicle and status of equipped security system.

The DS512, can be equipped with external GPS receiver. This allows to receive vehicle geographical position in the form of latitude and longitude. SMS notification also includes a link to online maps which can be opened in any web browser to visualise vehicle position.

The localisation of the vehicle is set only when the alarm is triggered or if the dedicated SMS command protected by individual DSPIN is sent to the VSS (see user manual).

The DS512 can work without alarm function (VSS) - without optical and acoustic signalisation of alarming. The device works as a SMS pager that monitors OEM CAN-bus security system or any third party or OEM analogue security system, already installed in the vehicle.

The 4 modes of DS512 operation are described below:

DS512 operating modes:

Mode 4 - FULL ALARM - complete CAN-bus VSS with audible and visible signalisation.

DS512 is the complete vehicle security system, controlled by OEM remote or Tytan remotes, integrated with the vehicle via CAN-bus.

In this mode the DS512 monitors the doors, trunk, bonnet and optional additional sensors or OEM alarm system. When the device is triggered the acoustic (siren) and visible (hazard lights) signalisation is started and GSM notification procedure is being started. Moreover, triggering of OEM alarm (for example by OEM internal movement sensor) also triggers the DS512. The door, bonnet, trunk, ignition and remote control signals are read from CAN-bus (in some cars bonnet and trunk CAN-bus signals may not be available). Analogue output allows to connect additional bonnet switch if the vehicle is not equipped with OEM bonnet switch or OEM bonnet switch is not recognised on CAN-bus. The hazard lights negative output can control the hazard lights switch (perimeter connection) or can control the relays of analogue connections to hazard lights bulbs. The siren and immobilisation NC relay is controlled by negative output. The vehicle is immobilised when the VSS is armed and the ignition is switched on.

The DS512 can be equipped with optional RF module (radio frequency module), which allows to control the VSS with additional Tytan remote transmitters. The receiver module has 2 outputs, for analogue control of central door locking (if Tytan remote transmitter is used) and for analogue power windows control (any remote transmitter is used).

The proper wiring diagram for Mode 4 is diagram 1.

Mode 3 - SILENT ALARM – CAN-bus VSS without audible and visible signalisation.

The DS512 operates as in mode 4, but the audible and visible signalisation is disabled. The engine immobilisation operates as in mode 4. The appropriate wiring diagram for Mode 3 is diagram 1 without siren and hazard lights connection.

Mode 2 - OEM PAGER – Pager for OEM CAN-bus security system

The DS512 works as a Pager, monitoring OEM VSS via CAN-bus. Detection of alarming in the monitored VSS causes the DS512 to notify up to 3 users via GSM about alarming. DS512 does not give any audible or visible signalisation in this mode. The device does not react on opening the door or switching on the

ignition as long as it does not trigger the OEM alarm. State of doors, ignition and alarm state are read from vehicle CAN-bus.

The proper wiring diagram is diagram 2.

Mode 1 - PAGER – Pager for any third-party analogue security system

The DS512 operates as an analogue pager to any third-party analogue VSS installed in the vehicle. The DS512 does not give any visible or audible signalisation. The DS512 does not monitor the doors, trunk, bonnet and ignition unless violating any of these inputs triggers the monitored analogue security system. Information of theft attempt is obtained from the monitored analogue security system. The device has programmable trigger input which, depending on configuration, reacts on positive signal +12V/+24V NO, positive signal +12V/+24V NC, ground signal NO, ground signal NC. The signal must be at least 1 sec. long, in order to ignore short siren chirps if the DS512 is connected to the siren circuit.

If minimal connection of just the triggering circuit is used - the proper wiring diagram is diagram 3.

Moreover, in this mode, analogue connections of DS512 can be done to ignition circuit, door signal and the VSS status signal. These analogue connections are not required, however they allow the DS512 to monitor and send full status of the vehicle (door closed/opened, system armed/disarmed, ignition on/off). If the VSS status signal is not connected the simplified information about vehicle will be used. Ignition connection causes the GPS position to be saved during the drive. This is done in case the vehicle would be parked in a place where the GPS signal is weak, e.g. underground parking. Connection of door status allows to check remotely if the doors are closed or opened.

If the extended connection of the additional signals is used, the proper wiring diagram is diagram 4.

If the DS512 works in Mode 1 it is still possible to choose the CAN-bus level and connect CAN-bus wires to the vehicle. This allows to read the door status and ignition from the vehicle CAN-bus network and still monitor the analogue security system by analogue connections.

Remote stop / anti-hijack function.

In the countries, where the Reg. 97 ECE does not apply, in all the operating modes described above, the DS512 anti-hijack function can be enabled. The anti-hijack sequence is triggered by the SMS protected by a individual DSPIN. The anti-hijack sequence involves optical and acoustic signalisation, and after several tens of seconds the vehicle is stopped. The immobilisation relay is active despite the status of ignition.

In order to have the acoustic and visible signalisation during anti-hijack / remote stop procedure in modes 1, 2 and 3 the siren and hazard lights connections must be done. These connections are presented in the diagram 5.

Immobiliser function.

In every mode (1-4), the immobiliser function of DS512 can be enabled. The immobiliser activates 30 seconds after the ignition is switched off and with every arm/disarm of VSS. Until authorisation (with PA button or Joker remote) the immobiliser does not permit to start the engine. Moreover, the immobiliser can independently of VSS start alarming (siren, hazard lights and GSM paging):

- if it is not authorised within 30 seconds after ignition on without previous authorisation (unauthorised vehicle start detection)
- if it is not authorised within 30 seconds after VSS is disarmed and door is open (unauthorised vehicle entry detection).

These 2 additional protection stages are configurable.

If the immobiliser function is being used, the immobilisation relay must be connected and the ignition signal must be read – via orange wire or via CAN. If immobilisation alarming is configured, the siren and hazard lights connections (diagram 5) must be connected. If the DS512 is in mode 1 – analogue pager and immobiliser unauthorised vehicle entry detection is planned the VSS status wire (blue, pin3) must be connected and door state must be read -via CAN or with white-red wire (pin3) – diagram 4. If the Joker remote is used for authorisation, the additional RF module (diagram 6) has to be connected.

2. DS512 SET

1. main unit (SIM card not included in set)
2. main wire harness
3. GPS module
4. immobiliser/anti-hijack module
5. LED/valetlet switch



3. PREPARATION OF SIM CARD

The DS512 can operate in GSM 900/1800 systems with any kind of SIM card. The only condition is to disable the SIM card PIN code request or setting the SIM card PIN code to 6789 (e.g. with any mobile phone).

If a prepaid SIM card is used please inform the user about the SIM card term of validity and the need of maintain funds on the SIM card account in order to keep the possibility of making calls and sending SMS by DS512.

SIM card phone number must be verified – this will be the vehicle number used for communication with the DS512.

Some SIM card providers require to perform at least one voice call in order to activate the SIM card.

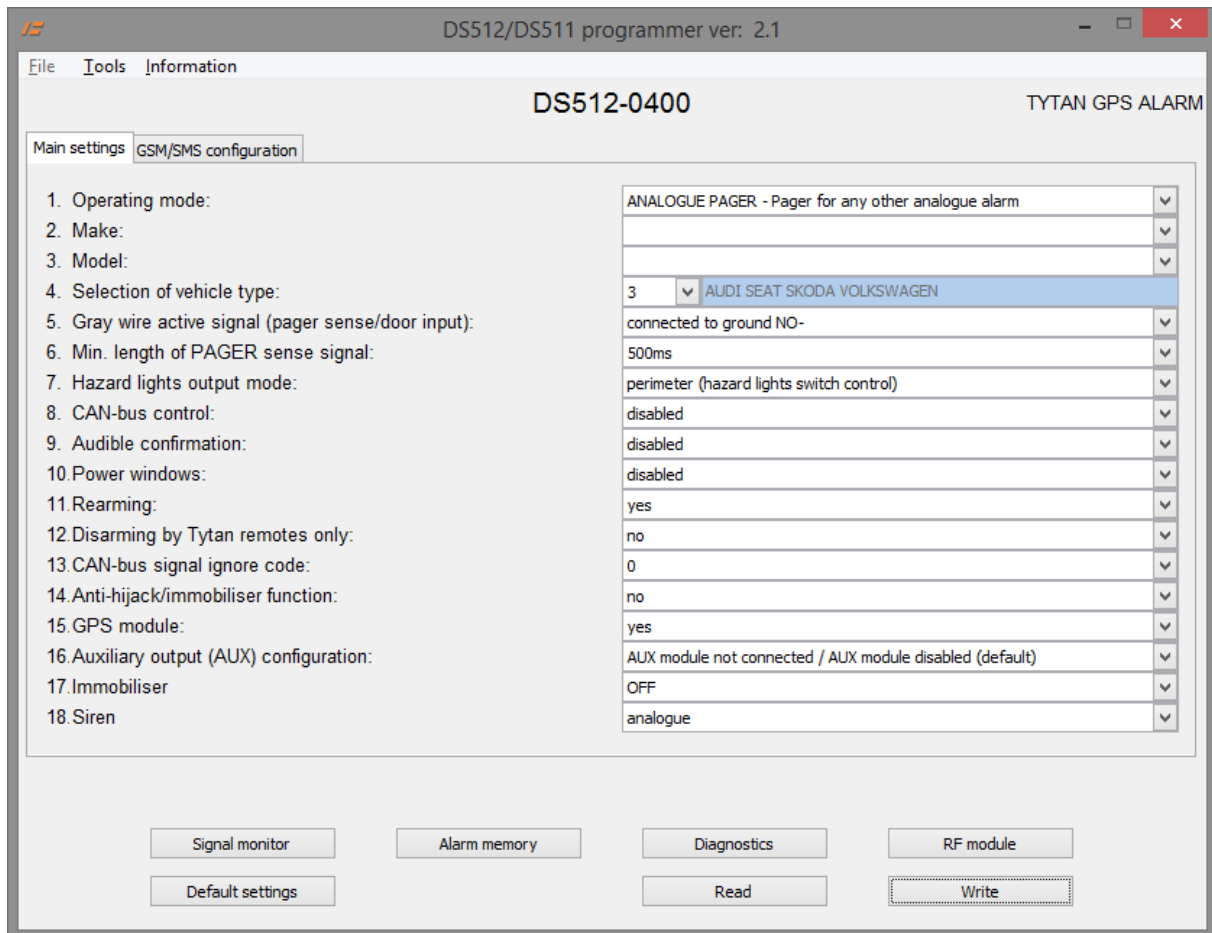
4. DS512 CONFIGURATION

The DS512 will operate in the vehicle only if it has been properly configured. The configuration is made with a dedicated PC software and the mini USB cable.

The software panel has the list of programmable parameters and few buttons, described below.

- *Read* loads the configuration from DS512 and shows the settings from the device on the panel.

- *Write* saves the parameter values shown in the panel to the device.



Parameter list:

1. Operating mode

The parameter selects the operating mode of DS512 as described above (analogue pager / OEM CAN-bus VSS Pager / Silent Alarm / Full Alarm).

2 - 4. Selection of vehicle type

In order to operate correctly with the vehicle CAN-bus in CAN-bus based modes 2, 3 and 4, the DS512 has to be programmed to a given vehicle model with so-called 'CAN level'. The CAN-bus level can be selected according to the table or the wiring diagram for a given vehicle. Moreover, it can be selected automatically, by choosing make and model of the vehicle from the list. The list is shown when the 'make and model' button is pressed.

5. Input active signal pager/bonnet

In modes 3 and 4 grey wire (PIN4) operates as an alarm triggering input, dedicated for connection of additional analogue bonnet switch or other switch which protects the vehicle. In mode 1 (pager

mode) this wire operates as an analogue alarm-sensing input dedicated for detection of alarming state of VSS installed in vehicle. In mode 2 this input is inactive.

The active signal of grey wire be programmed. The line can sense ground or positive signal. In case of ground sense - the internal pull-up in DS512 is activated. In case of positive signal sense, the internal pull-down is activated. Moreover, the line can react on applying the signal or lack of signal, thus the NO or NC signals can be handled.

For example in NC- mode:

- the input is inactive as long as the ground signal is applied to the input.
- the input is active as long as the ground signal is not applied to the input.

6. Pager signal length / time

Parameter allows to set minimal signal length of pager output. In mode 1 sensing a signal longer than length set in programmer is recognised as vehicle violation – the procedure of SMS / voice call notification starts. Default signal time is 500 ms (0,5 seconds). Choosing 0 causes immediate reaction after signal is activated. To check the operation of pager output see 'ALARM Pager' lamp in programmer signal monitor.

7. Hazard lights

The recommended method of hazard lights connection is 'perimeter mode' - connection of dedicated DS512 active ground output (pin11 pink-black wire) to hazard lights switch circuit.

DS512 can also control the bulb circuits with analogue high current connection. In such case the hazard lights connection should be set to 'analogue' and additional relays controlled by pink-black wire must be used - see diagram 1 and diagram 5.

For some specific vehicles like Fiat and Alfa Romeo dedicated 1 wire digital control for hazard lights and central door locks may be used. In such case set this parameter to 'Fiat control' and connect wire pink-grey to the proper wire shown in Tytan installation schematics.

8. CAN-bus vehicle control

On some vehicles the DS512 can perform a CAN-bus control of:

- hazard lights (in this case the analogue or perimeter connection is not required),
- power door locks,
- power windows.

The information which vehicles allow for CAN-bus control and which circuits can be activated is present on the vehicle list and on wiring diagrams.

9. Audible confirmation of arming/disarming

IMPORTANT! Audible confirmation can be enabled only in countries where the Reg. 97 does not apply. In opposite case, the homologation of DS512 as a VSS becomes invalid.

The parameter enables acoustic signalisation of arming/disarming VSS with short siren chirps.

10. Power windows roll-up

The parameter enables power windows roll-up when the system is armed. If the CAN-bus control is enabled (p. 4.5) the device can control the power windows through vehicle CAN-bus. If the DS512 is equipped with external RF module with TYTAN remote transmitters, using this feature enables a long pulse for windows roll up on the analogue door lock output in RF module).

11. Rearming

By default set to 'Yes' - in modes 3 and 4 - after disarming with remote transmitter / SMS command / mobile app the security system waits 30 seconds for any door to be opened. If any door is not opened during this time the system arms again (so called rearming). Setting this parameter to 'No' disables rearming – after disarming with remote transmitter / SMS command / mobile app the systems stays

disarmed until arming with remote transmitter / SMS command / mobile app. 'No' setting is recommended for vehicles / objects that do not have door switches.

12. Disarming by Tytan remote transmitters only

If set to 'Yes' parameter allows to operate in mode 3 and 4 as security system that can be armed by OEM remote transmitter / Tytan remote transmitter / SMS command / mobile app, however disarming is possible with Tytan remote transmitter / SMS command / mobile app. Disabling disarming with OEM remote transmitters protects the vehicle with sophisticated theft methods – cloning of OEM remote transmitters in order to disarm security system.

13. CAN-bus signal ignore codes

Parameter allows to ignore certain signals that appear on vehicle CAN-bus. It makes the system to work correct in vehicles where CAN-bus lines send false signals or the device interprets CAN-bus signals incorrectly. For example: opening the bonnet triggers OEM alarm in vehicle where OEM alarm is not installed or rear doors are constantly opened in 2 door cars. Proper value of ignore parameter is a sum of inputs: 1 – door front left, 2 – door front right, 4 – door rear left, 8 – door rear right, 16 – trunk, 32 – bonnet, 64 – OEM alarm, 128 – ignition. For example door front left and ignition is $1 + 32 = 33$. Default value 0 does not ignore any signals. Any ignored input is not signalised in programmer signal monitor.

14. Anti-hijack / remote stop enabled

IMPORTANT! anti-hijack / remote stop can be enabled only in countries where the Reg. 97 does not apply. In opposite case, the homologation of DS512 as a VSS becomes invalid.

The parameter enables the possibility to initiate anti-hijack sequence - execute remote vehicle stop via SMS / mobile app. Anti-hijack procedure can be followed by audible and visible signalisation (optional).

15. GPS receiver

By default the DS512 operates as SMS Pager with vehicle GPS localisation. The DS512 can also work without the GPS receiver – then the GPS receiver should be disabled in the pc programmer in order not to generate information about inability to fix GPS position.

16. Programmable AUX module output / channel

DS512 can be equipped with external AUX module. It allows to use additional programmable output OC type. Module allows to control external relays with SMS commands / mobile app. It allows to control for example auxiliary heaters, trunk release or vehicle lights. Module operation and working modes are described in chapter 15.

17. Immobiliser

The immobiliser function of DS512 can be enabled – 17th parameter configures the immobiliser mode. Immobiliser ON - immobiliser, when active does not permit to start the engine. The immobiliser is activated 30 seconds after the ignition is off or immediately after the VSS is disarmed. In order to start the engine, immobiliser has to be authorised, with Joker remote or with the PA button. Immobiliser will not activate if the Joker remote is within vehicle range.

ON with alarming 30s. after ignition – If the immobiliser is active and the ignition is switched on, the 30 second timer is started. If the immobiliser is not authorised during that 30 seconds, the alarming of unauthorised vehicle start is started.

ON with alarming 30s. after disarm and door open – Same as above and additionally the 30 seconds timer is started if the VSS was armed, then it was disarmed and the door was open. If the immobiliser is not authorised in that period, the alarming of unauthorised vehicle entry is started.

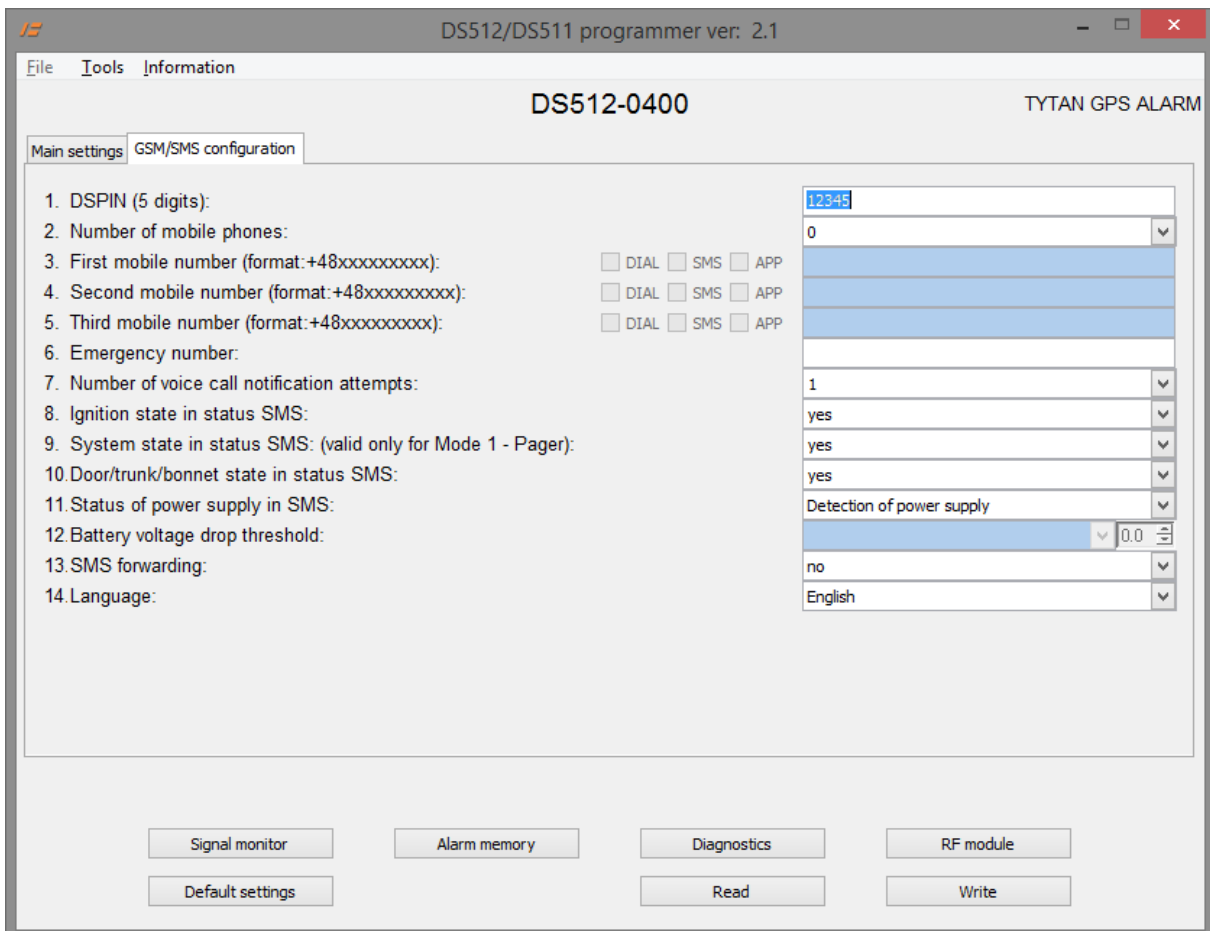
18. Siren

The parameter controls the siren output mode. By default – analogue siren - the output is the switched ground dedicated for any electronic siren with built in modulation. Setting analogue / pulsed output

makes the output toggling approx. 1.5x/sec. when alarming. This setting is dedicated for horn relay control.

5. GSM Paging parameters setup

Press the *GSM/SMS configuration* tab to open the configuration panel. The panel allows to set: number of mobile phones to be notified after an event, DSPIN code protecting from unauthorised use of the device and the information sent in status messages.



1. DSPIN

It is a 5 digit PIN code protecting the DS512 against unauthorised access by SMS commands. The commands and answers are described in DS512 User manual. DSPIN allows to send commands from any mobile phone number. If commands are sent from any mobile phone number programmed in position 3 to 5 in pc programmer the DSPIN is not required to execute the command.

2 - 5. Configuration of mobile phone numbers and notification types

Parameter 2 sets the number of mobile phones that will be notified after an event occurs in vehicle (e.g. alarm trigger). Mobile phone numbers can be set in 3, 4 and 5. Number must be typed in international format starting with country code, e.g. +48. Each of the programmed mobile phone numbers can be individually programmed to receive notifications by voice call/dial, SMS or notifications dedicated for TytanGPS mobile application (check www.tytangps.com for details). If the operation of mobile application is enabled additional code starting with '#' sign is included at the end on each SMS sent by DS512.

6. Emergency number

On certain markets the device allows to operate with crash / accident sensor and notify the emergency center after accident occurs. This parameter allows to check the emergency centre phone number.

7. Number of voice call attempts

After DS512 is triggered it starts the alarm notification procedure. During alarming it calls the programmed mobile phones. The call sequence repeats as follows: 1st mobile number - 2nd mobile number - 3rd mobile number. This parameter allows to set number of call sequences: settings 1, 2 or 3 result in one, two or three call sequences.

8 - 12. Configuration

The DS512 sends SMS messages with vehicle and monitored VSS status during alarming and as an answer to most received commands. The type of information in status messages can be programmed in parameters 8 to 12.

Parameter **8** determines if ignition status should be included in status messages. Ignition status is read either in analogue way (orange wire, PIN6) or via CAN-bus. Parameter should be set to YES. It can be set to NO only when Mode 1 (PAGER, according to diagram 3) is used analogue ignition wire is not connected and CAN-bus ignition is not monitored.

Parameter **9** determines if status message should include state of monitored VSS. This state is read either in analogue way (blue wire, PIN3) or via CAN-bus. If parameter is set to YES or the DS512 is in modes 2,3,4, the status message includes information if systems is 'armed' or 'disarmed'. Parameter should be set to YES. If it is set to NO status message only gives a 'ready' information. This parameter may be set to NO only when Mode 1 (PAGER, according to diagram 3) is used and blue wire (PIN3) is not connected to the monitored VSS arm status wire.

Parameter **10** determines if status message should include state of doors, trunk or bonnet of the monitored vehicle. These information are ready either in analogue way (blue/green wire, PIN5) or via CAN-bus. Parameter should be set to YES. This parameter may be set to NO only when Mode 1 (PAGER, according to diagram 3) is used and blue/green wire (PIN5) and CAN-bus wires are not connected to the vehicle

Parameters **11** and **12** allows to configure monitoring of the device power supply. If 11 is set to YES, each status message includes information about device power supply source (internal battery or vehicle battery). If parameter is set to 'Detection of power supply' and the power supply source will change the device sends a status message containing information about power supply source and voltage to every programmed mobile phone number. If parameter is set to 'Detection of power supply and low battery' the device additionally monitors the power supply voltage. If the voltage drops below a certain threshold a status message is sent by DS512 – it contains information about power supply source and voltage. Moreover the threshold of voltage drop can be set in parameter 12. Three settings available, '12V' monitors drop below 11V, '24V' monitors drop below 22V, 'other' allows to set the threshold manually.

13. SMS forwarding

Parameter allows to enable forwarding of SMS messages received by DS512 further to the 1st programmed mobile phone number. Usually the SMS messages received by DS512 are information from mobile operator. Please be aware that also all spam-like SMS would be forwarded as well!

14. Language

Parameter allows to change the language of SMS commands and received SMS information from DS512.

IMPORTANT: the DSPIN and mobile phone numbers can and should be programmed by the user!

6. DIAGNOSTIC TOOLS

Press the *Signal Monitor* button - the panel visualising the CAN-bus and analogue input/output signals with the indicators will be opened.

Signal monitor				
LOCK	DOOR_FRONT_LEFT	GLOBAL_IGNITION	SEND_LOCK	SEND_HAZARD_LIGHTS
UNLOCK	DOOR_FRONT_RIGHT	IGNITION_(CAN)		PA_button/ultrasonic
UNLOCKTRUNK	DOOR_REAR_LEFT	ACC_(CAN)	SEND_UNLOCK_ALL	LED
ALARM	DOOR_REAR_RIGHT	HZD_LEFT	SEND_OPEN_TRUNK	ALARM STATE
ALARM_OEM	TRUNK	HAZARD_LIGHTS		ENGINE_BLOCKED
ALARM_PAGER	BONNET_(CAN)	HZD_RIGHT	SEND_CLOSE_WIN	EXT_SENSOR_INP
LOCK_STATE	BONNET_(switch)	STATUS1-		EXT_SENSOR2_PRE
LOCKwoTRUNK_STATE	DOOR/TRUNK/BONNET	STATUS3+		EXT_SENSOR2
OUT_IMMORELAY_(pin12)	Ai0_(pin9)	RMT LOCK	AUX_SET	
OUT_HAZARD__(pin11)		RMT UNLOCK	AUX_OUTPUT	
OUT_SIREN__(pin13)	DI0_(pin6)	RMT UNLOCKTRUNK	AUX_STATUS	
OUT_LED__(pin10)	DI2_(pin4)		AUX_INPUT+	
			AUX_INPUT-	
	DI1_(pin3)	RMT JOKER		
		OUT_LOCK		
	DI5_(pin5)	OUT_UNLOCK		

Columns 1-5 show the logic input/output signals - if the indicator lights up, it means that the signal is active.

Lamp	Description
LOCK	Locking the vehicle with OEM remote, with SMS command or mobile app was detected. Locking command arms the VSS.
UNLOCK	Unlocking the vehicle with OEM remote, with SMS command or mobile app was detected. Unlocking command disarms the VSS.
UNLOCKTRUNK	Trunk release with OEM remote has been detected. It disables trunk, rear door and additional sensor vehicle protection if the VSS is armed.
ALARM	The DS512 operating as VSS has detected alarm condition and is alarming (only modes 3 and 4) and started audible and visible alarm signalisation (only mode 4). Each sensor triggers once in certain alarm state (until the ALARM_STATE lamp goes off)
ALARM_OEM	The DS512 has detected, that OEM CAN VSS has been triggered (only modes 2 and 4).
ALARM_PAGER	The DS512 has detected, that monitored analogue VSS has been triggered and is alarming (mode 1 - analogue Pager) .
LOCK_STATE	VSS system is armed / vehicle is locked.
LOCK_woTRUNK	VSS system is armed without trunk, rear door, additional sensor - the 3rd button on remote has been used.
DOOR (...)	Door FL, FR, RL, RR is opened (only if monitored via CAN-bus).
TRUNK	Trunk is opened (only if monitored via CAN-bus).
BONNET (CAN)	Bonnet is opened - signal from OEM switch read from CAN-bus.
BONNET (switch)	Bonnet is opened - analogue signal read via gray wire (pin4) in modes 3 and 4.
DOOR/TRUNK/BONNET	The lamp signals if any input is triggered. If the lamp is on, the door status in SMS is sent as opened. In DS512 mode 1, diagram 4 (analogue pager) that lamp shows the status of monitored VSS inputs.

GLOBAL_IGNITION	The result of ignition signal - the sum of signals from CAN-bus and analogue signal (orange wire).
IGNITION (CAN)	Ignition switch signal read from CAN-bus.
ACC (CAN)	ACC (ignition switch in accessory position) signal read from CAN-bus.
STATUS1-	Status of additional analogue ground signal connected to blue wire (pin 4), necessary for CAN-bus connections on some vehicles (e.g. Renault Clio).
STATUS3+	Status of additional positive analogue signal connected to orange wire (pin 3), necessary for CAN-bus connections on some vehicles (e.g. Subaru Forester).
SEND LOCK, SEND UNLOCK, SEND UNLOCKTRUNK SEND HAZARD LIGHTS SEND CLOSE WIN	The lamps show that DS512 is sending CAN-bus commands to the vehicle, that control the vehicle circuits (power door locks, hazard lights, power windows).
PA button / ultrasonic	The lamp show that the PA button is pressed or the additional sensor input is triggered (to disable additional sensors).
LED	The lamp repeats the LED state.
ALARM STATE	Device is in alarm state - it is alarming or device waits 30 s after alarming. Only mode 4 – hazard lights signalisation in progress. When this lamp lights up the notification procedure starts.
ENGINE_BLOCKED	The lamp shows, that due to immobiliser, anti-hijack or VSS function, device decided that the engine should be blocked/immobilised. In case of VSS and anti-hijack, it automatically makes the immobilisation relay output active. In case of immobiliser, the immobilisation relay output is active when ignition is on and sustained fo 10s when the ignition is off.
EXT_SENSOR_INP	Additional sensor input is active
EXT_SENSOR2_PRE	The lamp shows that additional sensor No2 Prealarm input was triggered.
EXT_SENSOR2	The lamp shows that additional sensor No2 Alarm input was triggered.

Columns 6-7 show the status of device analogue inputs / outputs.

Lamp	Description
OUT_IMMORELAY	The lamp shows that the immobilisation relay output is active - connected to ground.
OUT_HAZARD	The lamp shows that the hazard lights control output is active - connected to ground
OUT_SIREN	The lamp shows that the siren control output is active - connected to ground
OUT_LED	The lamp shows that the LED control output is active - connected to ground
A10 (pin9), D10 (pin6), DI2 (pin4), D11 (pin3), DI5 (pin5),	The lamps show the physical state at the given input. The lamp lights up if the voltage at the input is positive. That is why the PA button and STATUS1- inputs, which do have internal pull-up are displayed as active.

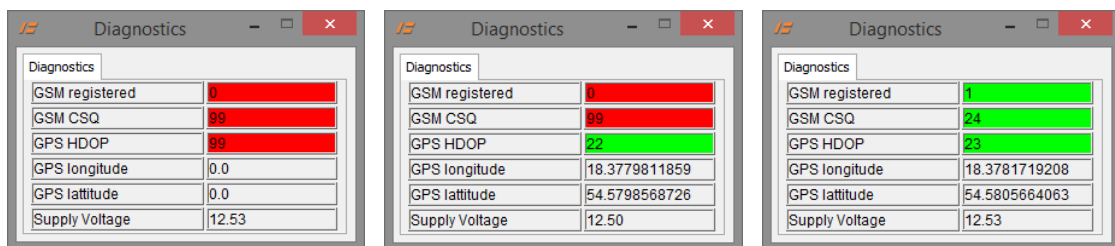
Column 8 shows the status of optional equipment: RF module with analogue central door lock control outputs and external sensor No2 inputs

Lamp	Description
RMT_LOCK	The lamp shows that LOCK button on Tytan remote transmitter was pressed
RMT_UNLOCK	The lamp shows that UNLOCK button on Tytan remote transmitter was pressed
RMT_TRUNK	The lamp shows that UNLOCK_TRUNK button on Tytan remote transmitter was pressed
RMT_JOKER	The lamp shows that the transmission from Joker remote has been received (authorisation of immobiliser)
OUT_LOCK	The lamp shows that the central door locking analogue control output on RF module is active - connected to ground
OUT_UNLOCK	The lamp shows that the central door unlocking analogue control output on RF module is active - connected to ground

Column 9 shows the signals for programmable optional AUX module

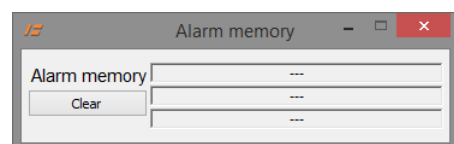
Lamp	Description
AUX_SET	Lamp indicates the expected state of the AUX output, resulting from the information from the mobile phone (additional channel modes 1, 2, 4, 5, 6) and automatic operation mode (additional channel modes 4, 5, 6)
AUX_OUTPUT	Lamp indicates the actual state of additional output controlling relay. In additional output modes 1, 3, 4, 5, 6 state of this lamp is equal as AUX_SET. In mode 2 during pulse control, lamp AUX_OUTPUT indicates actual pulses generated by the relay in order to enable / disable auxiliary heater
AUX_STATUS	Lamp indicates what state/value of output is recognised by DS512 – this state/value would be sent to the mobile phone. In modes 1, 3, 4, 5, 6 state of this lamp indicates reference setting of AUX_SET and setting OC output controlling the relay AUX_OUTPUT In modes 2, 7 of additional output, this lamp indicates state of the auxiliary heater or other electric circuit. This state is taken from inputs: white-yellow or white-brown. AUX_STATUS is active if at least one of above mentioned inputs is active.
AUX_INPUT+	Lamp indicates the state of AUX module white-yellow input. Lamp is on when input is connected to +12V
AUX_INPUT-	Lamp indicates the state of AUX module brown-yellow input. Lamp is on when input is connected to GND (ground)

Press the *Diagnostics* button to open the panel with GSM signal strength (CSQ), the information if the GSM is registered in the GSM network, GPS signal quality (HDOP) and GPS data: latitude and longitude. The green colour shows the values which are correct for the device to operate; red colour shows the values which are insufficient for the device to operate correctly.



Parameter	Description
GSM registered	Value 1 means that the device is correctly registered in the GSM network.
GSM CSQ	GSM signal strength. Value 0 to 14 is weak. Value 15 to 24 is normal. Value 25 to 31 is strong. Value 99 means no signal.
GPS HDOP	GPS signal quality. Value <35 is sufficient
GPS longitude	GPS position: longitude
GPS latitude	GPS position: latitude
Supply Voltage	DS512 supply voltage

Press the *Alarm Memory* button. The panel with alarm memory displays last 3 alarm trigger sources. The memory can be cleared by pressing the 'Clear' button.

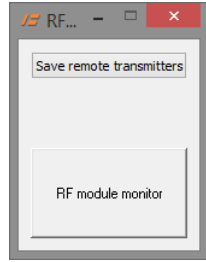


If the DS512 is equipped with optional RF module, press the *RF module* button to open test panel with 2 controls.

The *Save remote transmitters* button starts programming procedure of Tytan remote transmitters.

The *RF module monitor* control confirms reception of transmission from all remote transmitters programmed into RF module. After receiving transmission from any remote transmitter, the control lights up red for a second and number of the remote in the RF memory is presented.

Moreover, the controls from the eight column (RMT_LOCK, RMT_UNLOCK, RMT_UNLOCKTRUNK) of signal monitor can be used to test the buttons of remote control.



7. PROGRAMMING OF TYTAN REMOTE TRANSMITTERS

The DS512 can be equipped with additional RF receiver module, handling the Tytan remote transmitters.

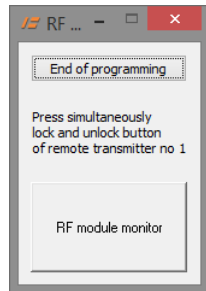
The RF module is automatically paired with DS512:

- when the DS512 is restarted. Please keep in mind, that to restart DS512 all power supply sources must be disconnected: the main power supply, internal battery and USB connector.
- when the *RF module* button is pressed on the dedicated PC software and the RF receiver diagnostic monitor is opened.

In order to program the remote transmitters, open the *RF module* panel and press the *Save remote transmitters* button.

Now press simultaneously Lock and Unlock buttons on remote transmitter or button on Joker token. The lamp lights up for a second. The remote transmitter / Joker is programmed.

Then press the buttons/button on next remote. When the last remote is programmed, press the *End of programming* button. The popup with number of remotes programmed will be displayed.



8. BASIC SMS COMMANDS

The DS512 can be controlled by SMS commands sent from any mobile phone. The commands are described in details in User Manual. The commands begin with 5-digit DSPIN code (**Important!** Not to be confused with SIM card PIN!). The DSPIN code prevents DS512 from unauthorised access. Default VSS PIN code is 12345. In this document, 2 basic commands, applicable for device testing will be shown.

DS512 Status

Basic method of testing the DS512 SMS commands functionality is to send the command that require the DS512 to respond with device status.

```
{VSS PIN} status
```

For the new device:

```
12345 status
```


The device will respond with the status SMS, thus confirming the correct DS512 mobile number and correct DSPIN code. The DS512 sends back the SMS with information on vehicle and security system status. The information about status is sent in a full or simplified version, depending on settings configured in the device during installation. In certain configuration if DS5412 works in Mode 1 PAGER and monitors a VSS which does not allow to check the armed/disarmed state, the simplified version of status message is sent. Full and simplified version of message contain hardware and firmware version in order to facilitate technical support.

The full version of system status is:

```
system:           {disarmed / armed / armed w/o sensors /
                  armed w/o trunk and sensors / ALARM in
                  progress! / disarming / valet mode /
                  ANTI-HIJACK / ANTI- HIJACK vehicle stopped}

{ALARM was triggered!}

Door, trunk, bonnet: {closed / opened}
Ignition: {on / off}
Vehicle battery voltage = 12.08V
Power source: {vehicle battery / internal backup battery}
```

Meaning of each state:

disarmed	VSS is disabled, vehicle is not protected,
armed	VSS is enabled, vehicle is protected,
armed w/o sensors	VSS is enabled, additional sensors are disabled (e.g. ultrasonic sensor, tilt sensor),
armed w/o trunk and sensors	VSS is enabled, trunk compartment temporary not protected and sensors temporary disabled due to the use of 3rd button on OEM remote transmitter,
ALARM in progress!	VSS is alarming; audible and visible signalisation enabled,
disarming	system was disarmed with OEM remote transmitter, waiting for door to be opened or ignition to be turned on,
valet mode	DS512 was set into service / valet mode thus the vehicle is not protected,
ANTI-HIJACK	DS512 received a command to immobilise the vehicle (anti-hijack function); vehicle is not immobilised yet,
ANTI-HIJACK vehicle stopped	DS512 received a command to immobilise the vehicle (anti-hijack function); vehicle is immobilised.
IMMOALARM	the alarming of unauthorised vehicle start/vehicle entry by immobilizer function is in progress

'ALARM was triggered' is displayed only if at the moment the VSS is armed and is currently not alarming, but since the systems was armed the alarm was triggered at least one time.

The simplified version of system status is:

```
system:           {ALARM in progress! / ready / service mode / ANTI-
                  HIJACK! / ANTI-HIJACK vehicle stopped}
DS512 FW:xxxx yyyy
```

Meaning of each state:

ALARM in progress!	VSS is alarming; audible and visible signalisation enabled,
ready	VSS is not alarming, insufficient information to determine if system is armed or not

valet mode	DS512 was set into service / valet mode thus the vehicle is not protected,
ANTI-HIJACK	DS512 received a command to immobilise the vehicle (anti-hijack function); vehicle is not immobilised yet,
ANTI-HIJACK vehicle stopped	DS512 received a command to immobilise the vehicle (anti-hijack function); vehicle is immobilised.
IMMOALARM	the alarming of unauthorised vehicle start/vehicle entry by immobilizer function is in progress

Programming DSPIN code, number of mobiles phones to notify and GSM signalisation.

A dedicated command to configure notification methods, mobile phone numbers and DSPIN allows to program these confidential settings individually by the user.

This command allows to change the DSPIN which protects the SMS commands to be executed in DS512 and also allows to set the phone numbers which would be notified in case of alarm trigger. 0, 1, 2 or 3 phone number can be programmed.

```
{current DSPIN} setgsm {new DSPIN} {new DSPIN} {number of mobile phones} {first phone number} {p1} {t1} {s1} {m1} {second phone number} {t2} {s2} {m2} {third phone number} {t3} {s3} {m3}
```

- current DSPIN:** current (old)DSPIN code or default DSPIN code (12345),
- new DSPIN:** DSPIN, which will be set as new code,
- number of mobile phones:** number of mobile phones which will be notified by voice call and/or sms in the event of alarm trigger (0, 1, 2 or 3 phone numbers can be programmed),
- first, second and third phone number:** phone numbers which will be notified in the event of alarm trigger, numbers in international format, '+' at the beginning, for example +CCCXXXXXXXXXX, (where CCC is the international country code, e.g. +7, +81 or +359),
- p1:** parameter enabling SMS forwarding – any SMS received by DS512 will be resent on the first mobile phone number,
- t1, t2, t3:** parameters for voice call notification for given number, '1' enables voice call notification, '0' disables voice call notification,
- s1, s2, s3:** parameters for SMS notification for given number, '1' enables SMS notification, '0' disables SMS notification,
- m1, m2, m3:** parameter for activating or deactivating the operation with mobile application, '1' enables application, '0' disables application, **important** – if this parameter is set to '1' the SMS notification (accordingly s1, s2 or s3) must be also set to '1' in order to the application to run properly

The confirmation of the command is the SMS with information:

```
DSPIN set: {new DSPIN} number of mobile phones: {number of mobile phones}
{first phone number} resend:{yes/no} call:{yes/no} sms:{yes/no}
app:{yes/no},
{second phone number} call:{yes/no} sms:{yes/no} app:{yes/no},
{third phone number} call:{yes/no} sms:{yes/no} app:{yes/no}
```

Example:

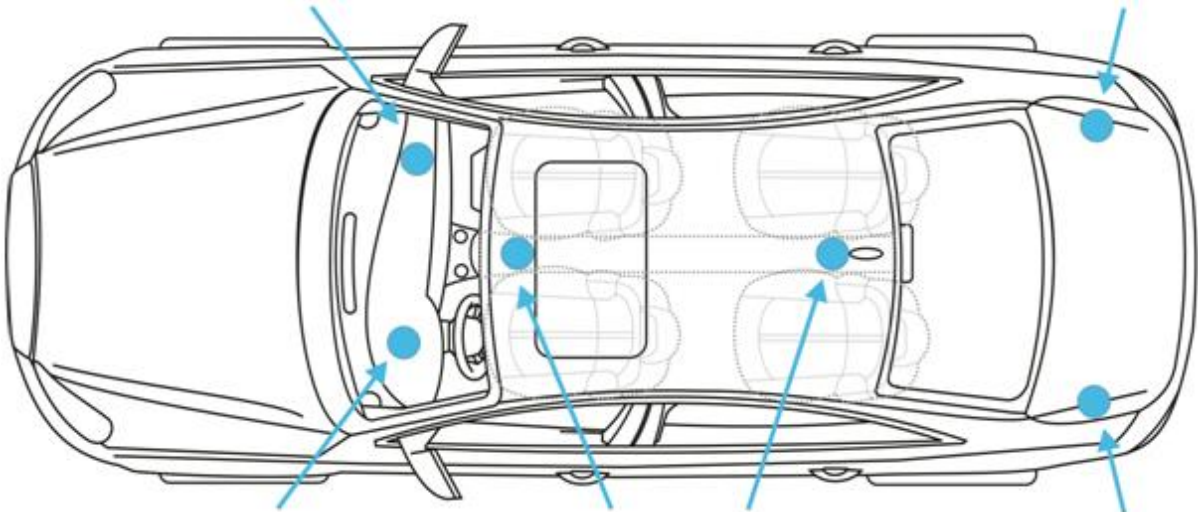
```
12345 setgsm 54321 54321 3 +44501123456 1 1 1 0 +44502123456 0 1 0  
+44503123456 0 1 1
```

sets new DSPIN to 54321 and 3 mobile phone numbers. These numbers will be notified after the alarm trigger. First mobile phone number will be notified by voice call and SMS, second number just by SMS, third number by SMS and operation via mobile application TytanGPS. The unit responds with SMS confirmation:

```
DSPIN set: 54321 number of mobile phones:3  
+44501123456 resend:yes call:yes sms:yes app:no,  
+44502123456 call:no sms:yes ap:no,  
+44503123456 call:no sms:yes ap:yes
```

9. INSTALLATION OF DS512

It is recommended to install the DS512 inside the vehicle, in a well hidden place with difficult access for third parties, e.g.: under the dash, in the centre tunnel, behind cover in trunk etc.



- The DS512 cannot be exposed to water, gasoline, lubricants or other chemicals.
- The device is not waterproof.
- Due to the internal GSM antenna the installation location is restricted to have radio transmission interferences – do not install the device in place heavily shielded with metal parts of vehicle (inside closed metal sections).
- Installation location should be chosen having regard to location of GPS module and wire harness.
- After installation of the device but before re-assembly of side panels or covers the DS512 functionality must be tested!

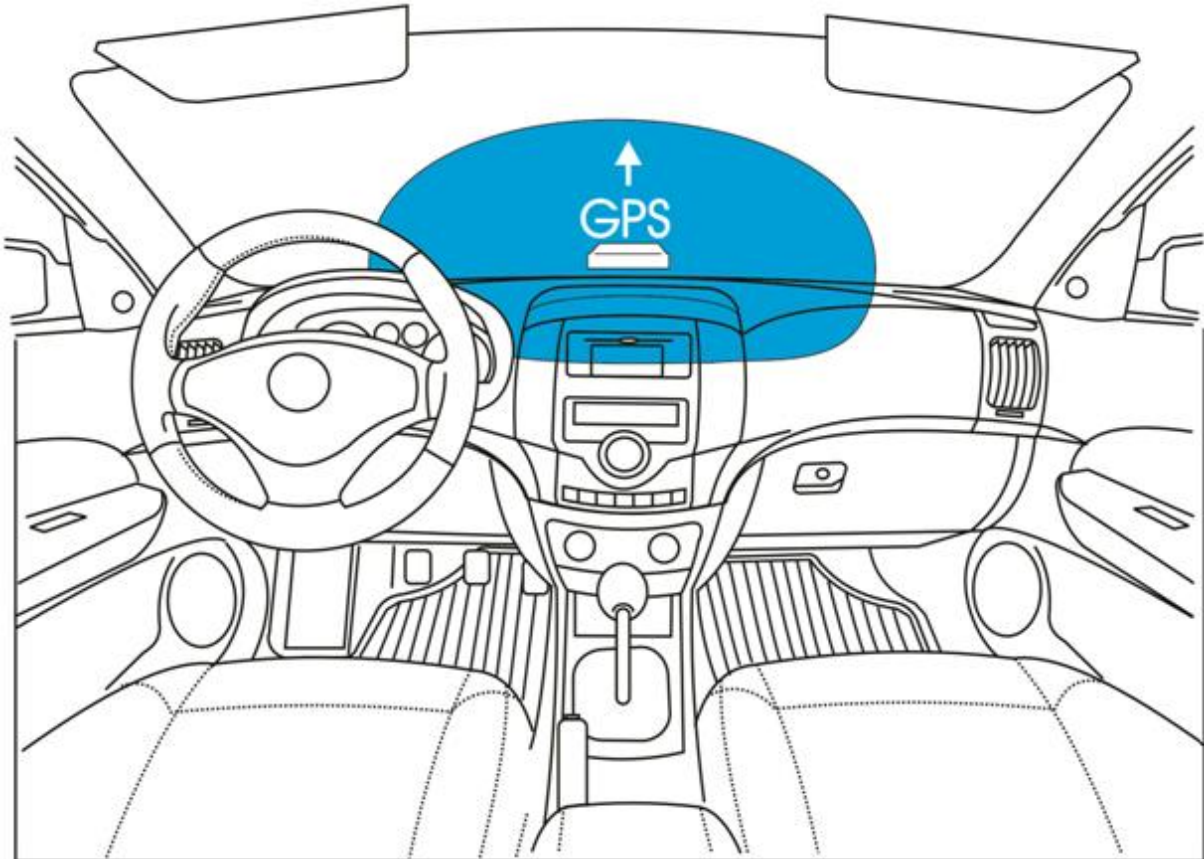
10. INSTALLATION OF GPS RECEIVER

The DS512 can be equipped with external GPS receiver integrated with GPS antenna. Correct installation of GPS receiver is crucial for the precision of localisation and is determined by some contradictory condition.

Due to security reasons, the receiver should be installed in a hidden place with difficult access for third parties.

The GPS receiver cannot be covered with metal objects and should 'see' as much sky as possible. The recommended installation place is the area directly under the dashboard, close to the windshield in the central part of the dashboard.

- The GPS module must be installed with the top side directed in the sky (horizontally). The top side of module cannot be covered with metal parts.
- Recommended location for GPS module is below the middle console.
-



- The GPS module cannot be installed near the door/windows pillars as they may interfere and decrease GPS signal strength and quality thus worsen the GPS localisation.
- The GPS module can be installed bottom with magnet on metal parts of vehicle.
- Sometimes, in the vehicles with glass covered by thin metalized layer, there is a need to install the GPS receiver outside the cabin.
- The GPS module wire needs to be lead to DS512 and fixed with zip-ties and/or insulating tape.

IMPORTANT! The GPS module installation should be verified at the device start-up procedure with diagnostic monitor described above.

IMPORTANT! The time necessary to fix correct GPS position can reach up to few tens of seconds.

IMPORTANT! The GPS receiver is not waterproof!

11. PREPARATION OF THE DS512 TO WORK

- A. Prepare SIM card (chapter 2) and insert it into SIM card slot in DS512.



- B. Connect the DS512 to the PC, run configuration software on PC. Proceed with the device configuration (chapter 4 and 5).
C. Connect internal battery (if device is equipped) to a socket on the PCB.



- D. Connect GPS module (module is integrated with GPS antenna).
E. Connect the main connector to the device. Enable power supply. Leave the USB connected (that will start up the GPS even without alarming or localisation command).
F. Wait approx. 60 seconds.
G. During that period the device should start-up, register in GSM network and fix the GPS signal.
H. **Use the PC software diagnostic panel to verify the installation of GPS module. Verify the GSM registration and signal strength with a PC software.**

Another fast method of checking if the device is registered in the GSM network is to make a call to the DS512 from any mobile phone. The 'call' signal confirms that the DS512 is registered and accessible in the GSM network.

12. GIVING THE SYSTEM TO THE USER

After the system is installed and checked, the user must be informed about operation of the system, the meaning of DSPIN code and **user is obliged to change individually**: DSPIN code, mobile phone numbers, number of mobile phones and to test operation of at least status or localisation SMS command. After that the SMS Paging must be tested.

13. TECHNICAL DATA

Power supply:	9-30V
Mean (300 seconds) power consumption at 12V :	16mA
Maximum sink current per single output:	500mA
Temperature range:	from -40°C to +85°C
Alarming time:	30 sec.

14. DESCRIPTION OF INPUTS/OUTPUTS

	Name	Active signal	Function
1	CANH		Vehicle CAN-bus connection required to read information on OEM remote, door status, ignition status, CAN-bus vehicle control and others.
2	CANL		
3	STATUS1- ARMED	Input / Ground	Mode 1: input of ground signal informing, that monitored VSS is armed. Modes 2, 3, 4: analogue signal required to distinguish OEM remote signal in some vehicles (e.g. Renault Clio).
4	BONNET PAGER	Configurable Input: Ground or positive, NO or NC	Mode 1: Alarming detection input in pager mode, reacts on signal longer than 1s. Modes 2, 3, 4: Bonnet switch input, or other signal triggering alarm if in armed mode.
5	PA button	Input / Ground	PA button input.
6	Ignition STATUS3+	Input / Positive	Modes 1,2,3,4 analogue ignition signal input. Modes 2,3,4, - on some vehicles, which do have STATUS3+ icon in installation diagram analogue signal required to distinguish information on OEM remote in some vehicles (e.g. Mazda 3, Subaru Forester).
7	Power supply		DS512 power supply 9-30V
8	Not used		
9	VSS input / door control	Input / ground	(mode 1) Monitoring of other VSS inputs. Requires 10k-47k pull-up resistor to VCC.
10	LED	Output / Ground (1.5A)	Switched ground control of LED. In DS512 cable loom, there is the resistor that limits the LED current.
11	Hazard lights	Output / Ground (1.5A)	Perimeter hazard lights control (hazard lights switch connection) or hazard lights relays control signal (blinking) for high-current bulb circuit connection.
12	Immobilisation relay	Output / Ground (1.5A)	Switched ground control of immobilisation NC relay. The relay is activated when the alarming starts The relay is deactivated when the VSS is disarmed.
13	Siren	Output / Ground (1.5A)	Switched ground control of electronic siren.
14	Ground		DS512 ground

15. PROGRAMMABLE AUX MODULE OUTPUT / CHANNEL

DS512 may be equipped with programmable AUX module for additional output / channel. The main purpose of this module is to enable and disable any object using SMS commands or TytanGPS mobile app. An object can be, for example: auxiliary heater, lights or open the vehicle trunk release. Additional AUX channel can be switched on permanently or for a specified period of time (up to 999 minutes). If the additional channel operation is programmed, the DS512 transmits 'AUX output status' in each SMS with the status of the device. The module has several programmable configuration modes

dedicated to specific applications - auxiliary heater control, trunk release, lights control for coming home and leaving home functions, etc.

15.1. AUX MODULE INPUTS / OUTPUTS

AUX module must be connected to the RF module socket on wire harness, that is to 3 pole white connector. If there is a need to use both modules: AUX and RF at the same time – then the RF module must be connected to the socket on AUX module.

AUX module has one OC type output, coming on black wire in 2 pole connector. White wire is internally connected to the power supply. The connector fits the NO/NC relay included in AUX module set.

AUX module has two inputs, they are used in mode 2 and 7 to control the switch state of device. White-yellow input senses +12V, brown-yellow senses GND (ground).

15.2. AUX MODULE OPERATION MODES

Mode 1 – input switched constantly or for programmed time

Basic operating mode for switching on and off any device, for example to control auxiliary heater without built in timer or controller.

After receiving a switch on command the relay is switched on, accordingly permanently or for certain time (from 1 second to 999 minutes).

The relay is being switched off either when the time goes out of a switch off command is received by DS512.

In this operation mode 'State of additional AUX output' is status information sent by DS512 responds to relay switch on or switch off state. White-yellow and brown-yellow inputs are ignored.

Mode 2 – control or auxiliary heater switch

Mode for devices that turns on and off with consecutive presses of single switch, that is by pulses on single wire. Mode designed to control auxiliary heaters, either OEM heaters of aftermarket heaters (like Webasto or Eberspaecher), equipped with internal timers/controllers or control switches with indicator lamp.

AUX module relay circuit must be connected parallel to the auxiliary heater control switch.

To make the mode operational a proper signal (+12V or ground) must appear during activation of auxiliary heater. In this case it may be a signal of auxiliary heater control lamp or OEM timer signal that switches the heating unit. To control the heater **only one** of the wires must be connected, if the control signal is +12V – use white-yellow wire, if control signal is ground use brown-yellow wire.

From the user side the operation of mode 1 is similar to mode 2. The heater is turned on after receiving a switch on command: permanently or for certain time (from 1 second to 999 minutes). The device is turned off after receiving switch off command or when the time goes out.

Operation of relay - switch on command

After receiving a switch on command DS512 checks AUX module status lines if the controlled device is turned on or off.

- If the device is off, AUX module sends a pulse signal on relay control output. Relay enables the device switch and auxiliary heater is switched on.
- If the controlled device is turned on during receiving switch on command, AUX module does not send any pulse to the relay in order not to turn the auxiliary heater off.

Operation of relay - switch off command

After receiving a switch off command or the operation time goes out the DS512 checks AUX module status lines if the controlled device is turned on or off.

- If the device is on, AUX module sends a pulse signal on relay control output. Relay disables the device switch and auxiliary heater is switched off.
- If the controlled device is turned off during receiving switch off command of the turn off command is received after programmed operation time is out, AUX module does not send any pulse to the relay in order not to turn the auxiliary heater on.

In mode 2 the 'state of AUX output' sent to the user corresponds the checked AUX module status lines and informs if the controlled device is turned on or off.

Mode 3 – trunk release control

In mode 3 the AUX module input operates as output for trunk release. It operates only if DS512 is equipped with RF module and additional remote transmitters and DS512 is configured in MODE 3 – SILENT ALARM or MODE 4 – FULL ALARM. Pushing the trunk release button on additional Tytan remote transmitter results in turning the relay on for 1 second.

In mode 3 the AUX module relay cannot be controlled by SMS or TytanGPS mobile application commands.

Mode 4, 5, 6 – vehicle lights control

In mode 4, 5 and 6 the AUX module output can control chosen vehicle lights circuit in order to use functions:

- **mode 4 – coming home** – enables vehicle lights during arming of DS512
- **mode 5 – leaving home** – enables vehicle lights during disarming of DS512
- **mode 6 – coming and leaving home** - enables vehicle lights during arming and disarming of DS512

The AUX module output is enabled automatically for 30 seconds. The functions operate with OEM remote transmitters and Tytan remote transmitters. The lights go off 30 seconds after disarming of the DS512 or after opening of vehicle doors. In these modes the vehicles lights can be turned on or off remotely in any moment for certain time or constantly by SMS or TytanGPS mobile application. However during arming and disarming of the system automatic control has higher priority than remote control by SMS or TytanGPS app thus takes control of the output.

The coming home and leaving home functions are available only if DS512 operates in MODE 2 – OEM PAGER, MODE 3 – SILENT ALARM or MODE 4 – FULL ALARM.

Mode 7 – additional input

In mode 7 the AUX module output is not used thus there is now way to control it. In this mode it operates as additional input that uses one of the wires: white-yellow or brown-yellow to monitor the state of any device or electric circuit in car.

Module implements the sum of both inputs: that means the AUX module sends an input trigger information if any of the above mentioned inputs is triggered. Either +12V appears on white-yellow or ground appears on brown-yellow wire.

State of the inputs is sent in every SMS or TytanGPS vehicle status.

Mode 8 – same as mode 1 + input for AUX toggle switch

In mode 8 the AUX module works same as in mode 1 with the difference concerning white/yellow and white/brown inputs of AUX module. 1 second activation of any input switches the AUX output for 20 minutes or switches off the AUX output. Mode 8 is dedicated for direct control of aftermarket parking heater with DS512, by mobile phone or a dedicated button installed in the vehicle.

Mode 9 – OBD/diagnosis connector cut-off relay control

In mode 9, the AUX output is connected to ground if the DS512 is in workshop mode and the ignition is switched on. The AUX output is sustained for 30 seconds after ignition switch off. Such mode can be used to control cut-off NO relays of diagnosis lines in OBD connector. Thus the diagnosis of vehicle and coding of remotes/keys in the vehicle is possible only if the vehicle is in workshop mode.

15.3. AUX MODULE DIAGNOSIS

The DS512 control lamps panel called 'signal monitor' contains all the lamps necessary to control or diagnose the operation of additional channel. Meaning of each lamp is described in chapter 6 of this manual.

16. DS512 WIRING DIAGRAMS

Mode 4 – FULL ALARM – stand alone vehicle security system with audible and visible signalisation, only GSM notification

- Standard connection, with remote immobiliser, with or without signalisation diagram 1
- Additional connection of RF module with central door locking outputs diagram 6
- Connection of additional sensor with pre-alarm (optional) diagram 7

Mode 3 – SILENT ALARM – stand alone vehicle security system without audible and visible signalisation, only GSM notification (with remote immobiliser, without signalisation)

- Standard connection, with remote immobiliser, without signalisation, (without connections marked with *1) diagram 1
- Standard connection, with remote immobiliser, with signalisation, (with connections marked with *1) diagram 1
- Additional connection of RF module with central door locking outputs diagram 6
- Connection of additional sensor with pre-alarm (optional) diagram 7

Mode 2 – PAGER OEM – monitoring of OEM CAN-bus VSS

- Connection monitoring VSS, input status and arm/disarm status diagram 2
- Connection for remote immobiliser diagram 5
- Additional connection of RF module with central door locking outputs diagram 6

Mode 1 – PAGER – monitoring of third-party analogue VSS

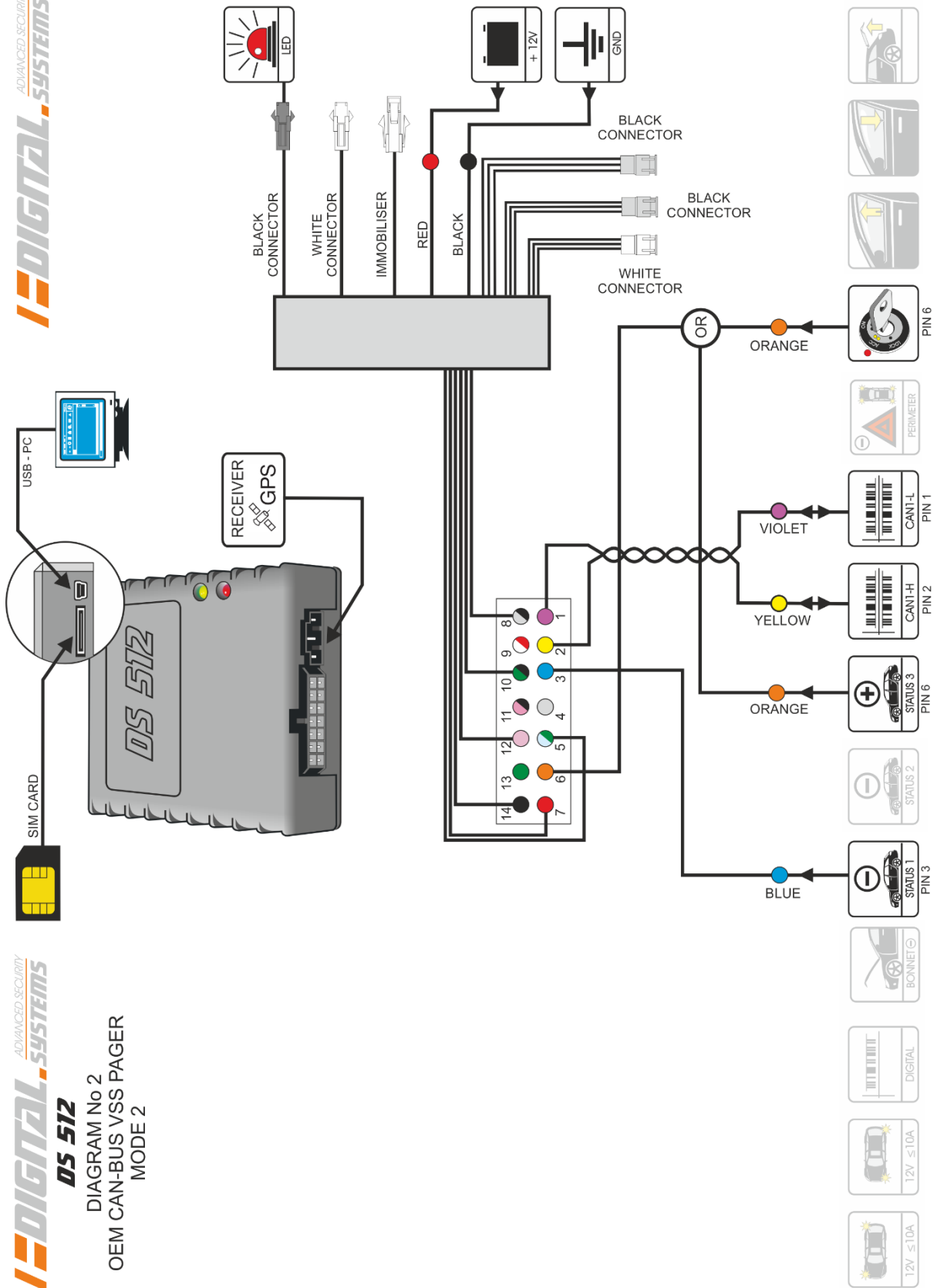
- Connection monitoring VSS alarming diagram 3
- Additional connection for input status and arm/disarm status diagram 4
- Connection for remote immobiliser diagram 5
- Additional connection of RF module with central door locking outputs diagram 6

AUX module

- Connection for the AUX diagram 8

DIAGRAM No 2
OEM CAN-BUS VSS PAGER
MODE 2

DIAGRAM 2 - Mode 2 - monitoring OEM CAN-bus VSS



DS 512

DIAGRAM No 3
ANALOGUE VSS PAGER
MODE 1
(NO DOOR / IGNITION /
VSS STATUS / MONITORING)

DIAGRAM 3 - Mode 1 - Pager for any third party analogue VSS
(ignition, door, armed signals are not monitored)

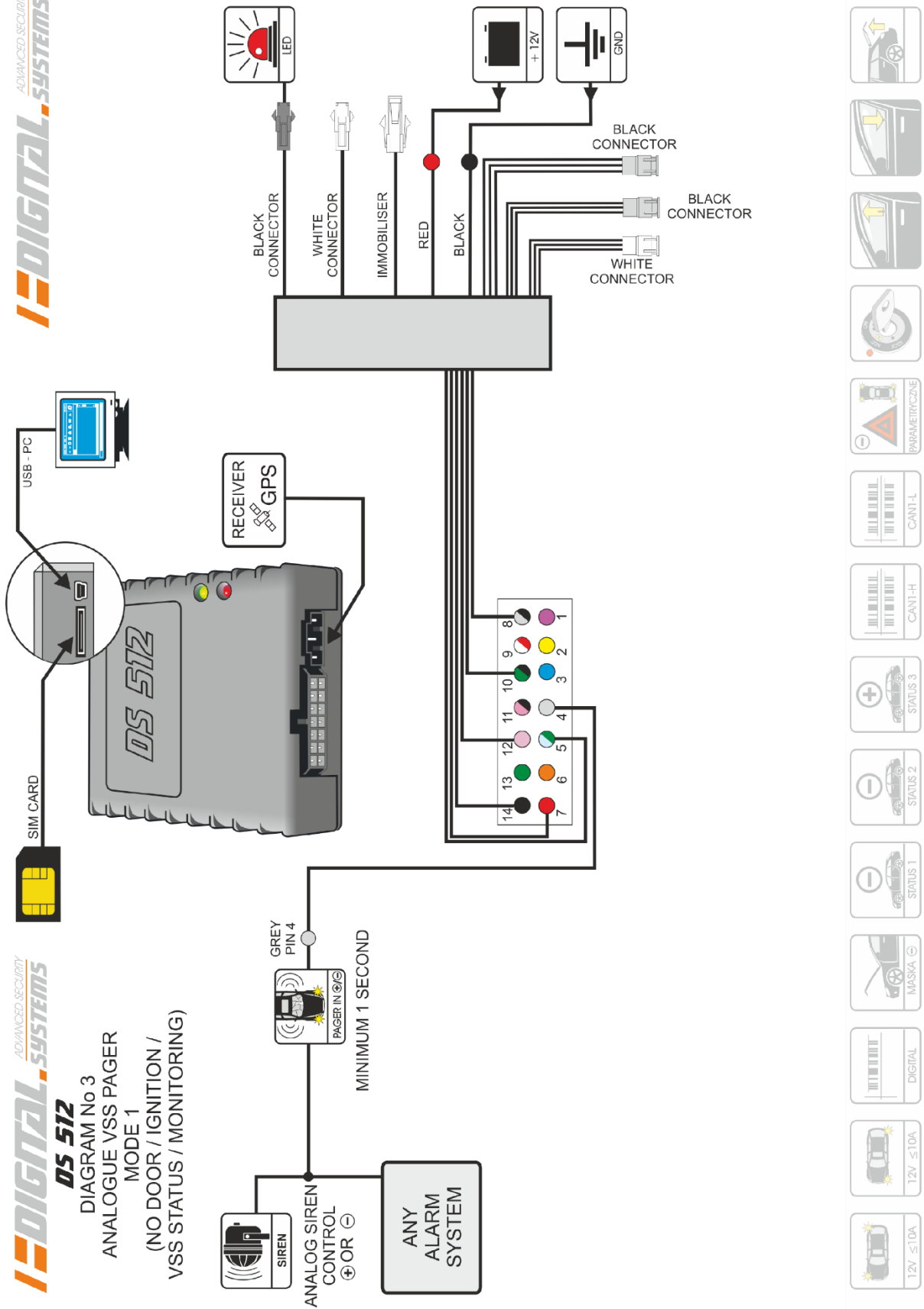


DIAGRAM 4 - Mode 1 - Pager for any third party analogue VSS (inputs monitored)
 (ignition, door and armed signals are monitored)

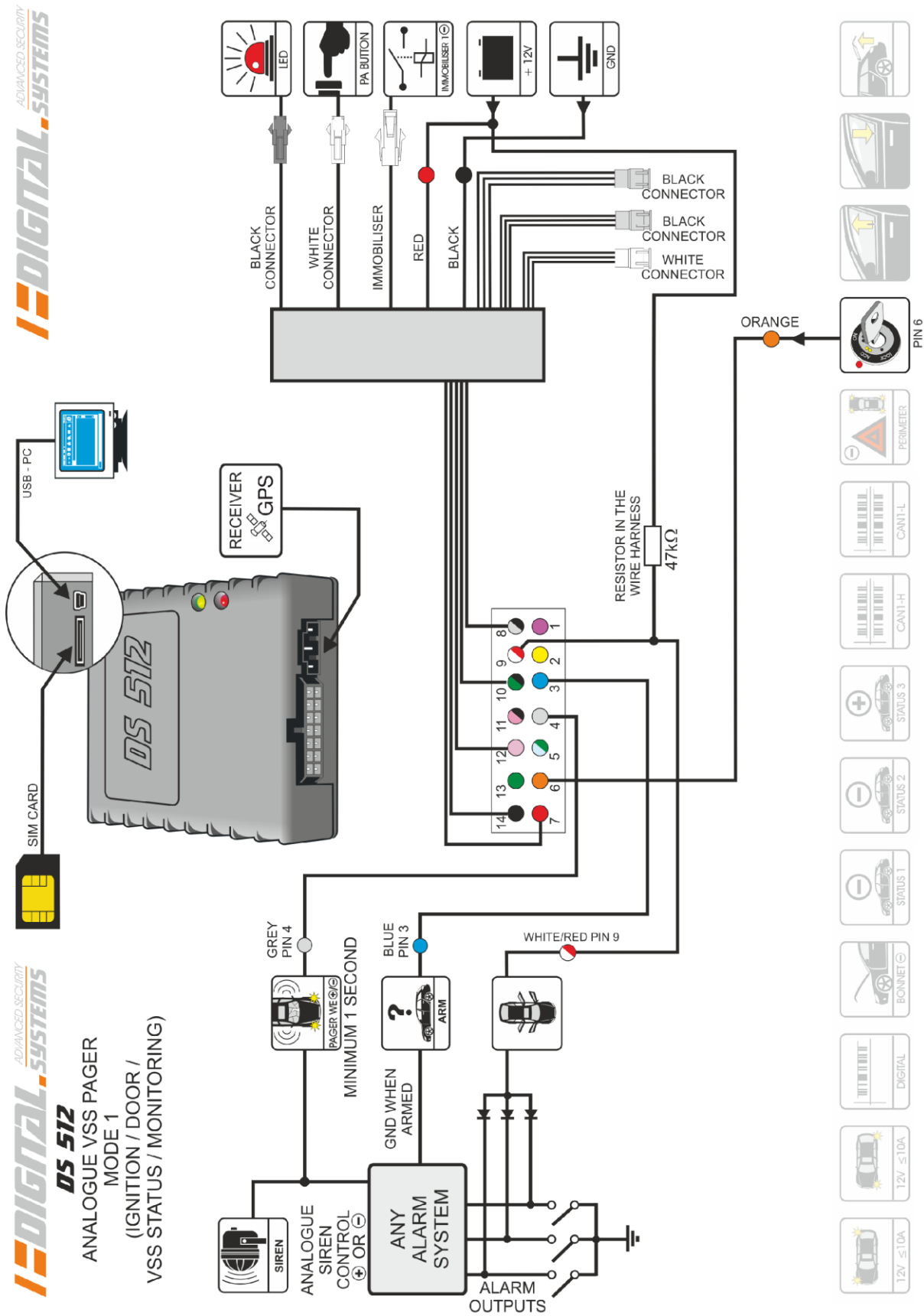


DIAGRAM 5 - connections for anti-hijack/remote immobiliser function in all modes

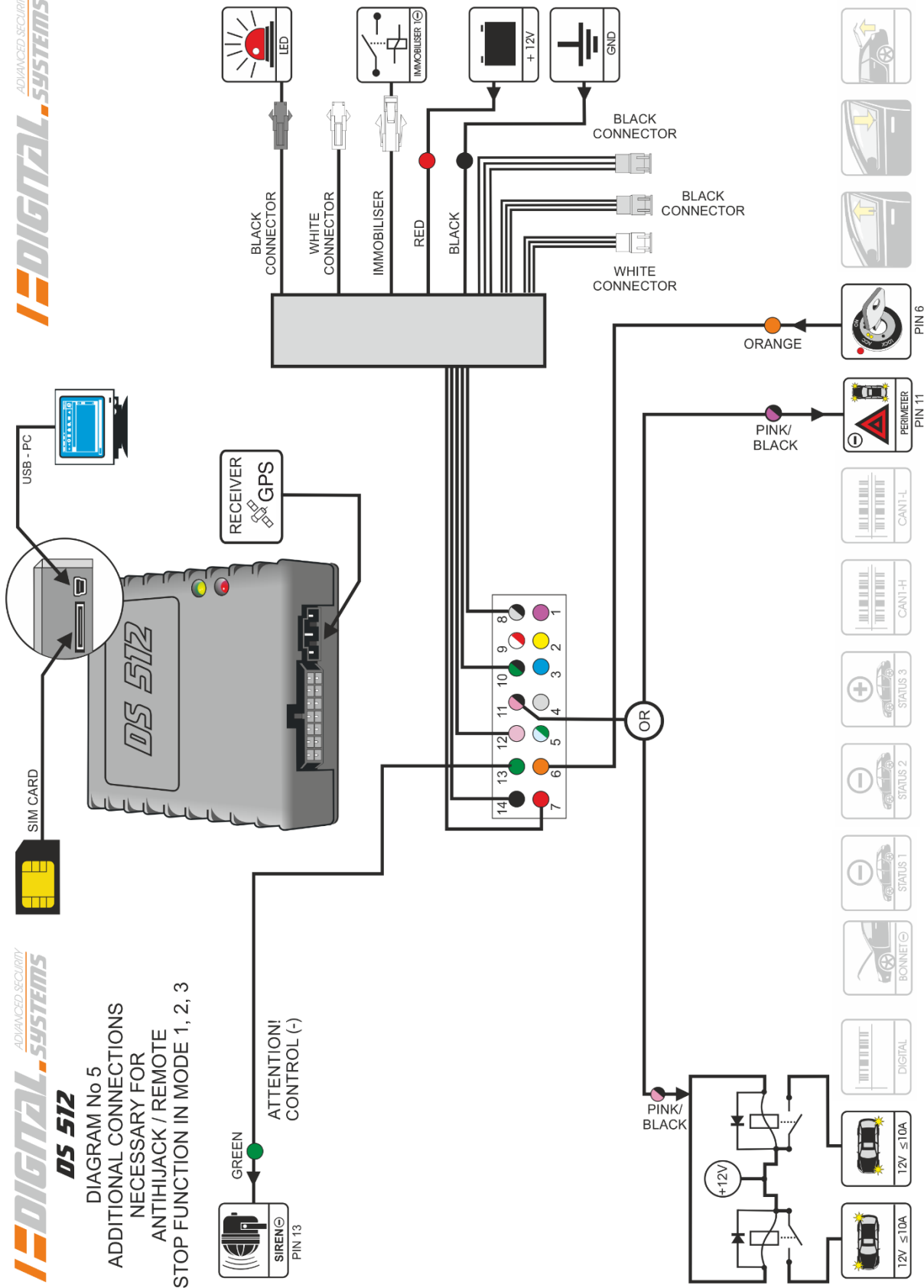


DIAGRAM No 6
CONNECTION OF RF RECEIVER
MODULE WITH ANALOGUE
POWER DOOR LOCK
CONTROL OUTPUTS

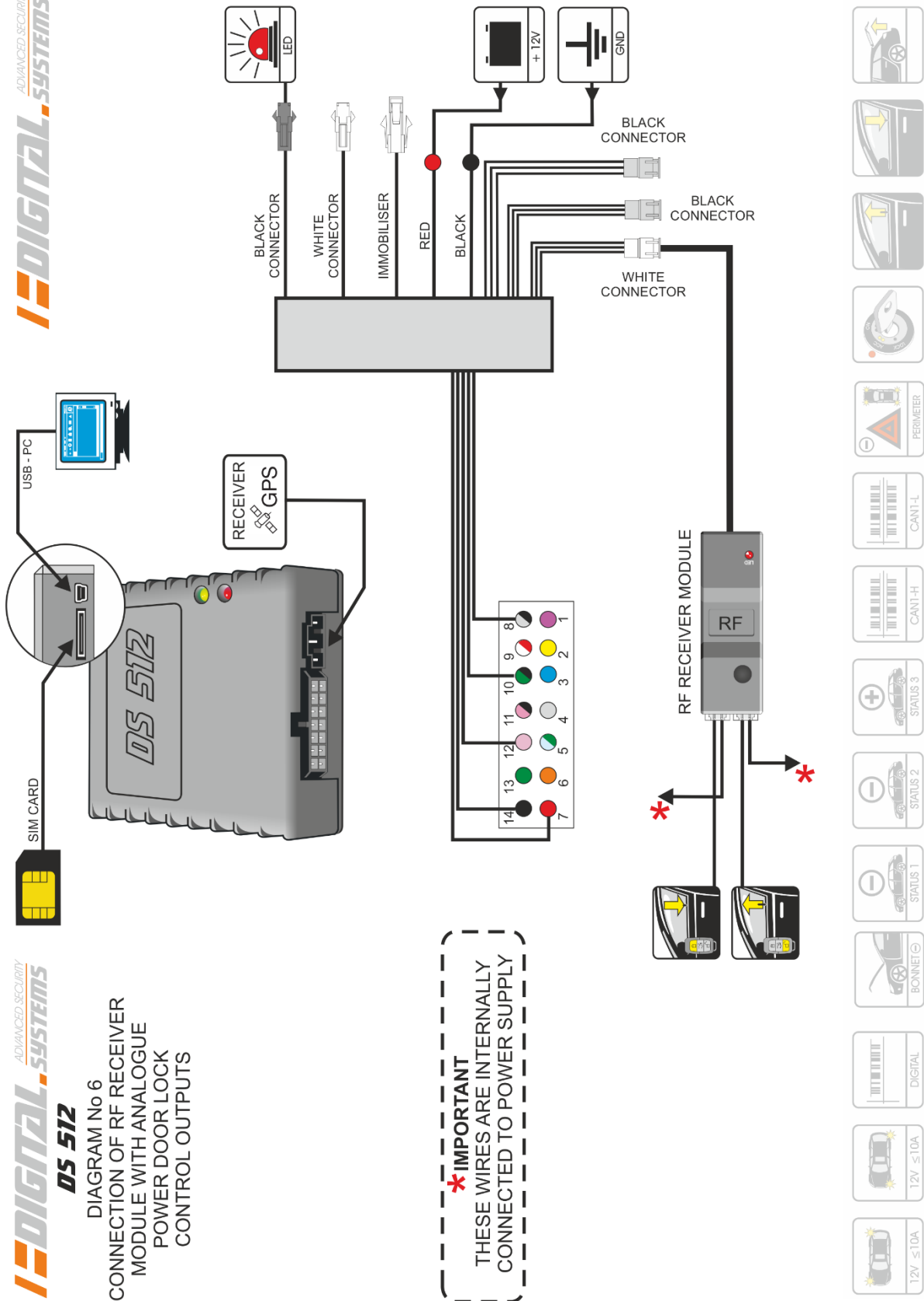


DIAGRAM 8 – AUX module



PROGRAMMABLE AUX MODULE OUTPUT / CHANNEL FOR DS512

